

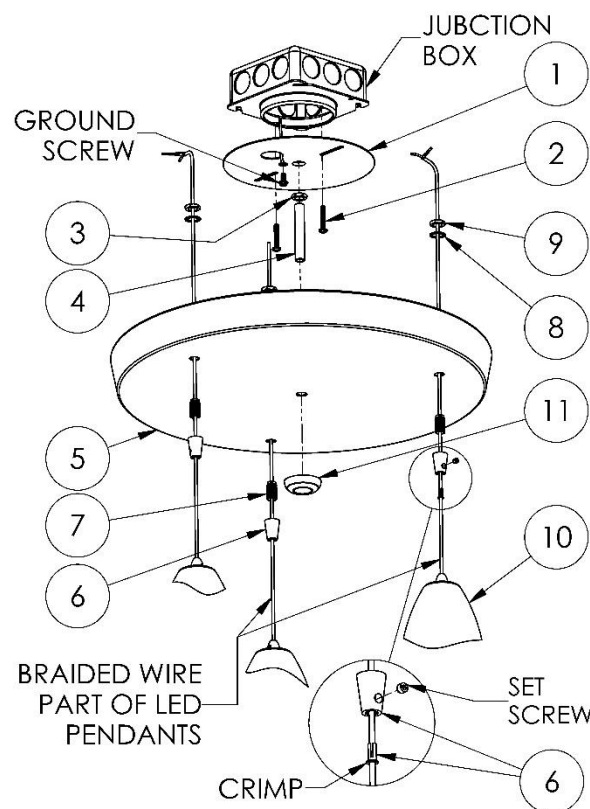
## Safety Precautions

- Read all safety precautions and installation instructions carefully before installing or servicing this fixture. Failure to comply with these instructions could result in potentially fatal electric shock and/or property damage.
  - It is recommended that a qualified electrician perform all wiring. This fixture must be wired in accordance with all national and local electrical codes.
  - Do not handle any energized fixture or attempt to energize any fixture with wet hands or while standing on a wet or damp surface or in water.
  - D2 fixtures are designed for use in a 120-277V AC, 60Hz fused circuit and are compatible with 0-10 V dimmers. Make sure that the power source conforms to the requirements of the fixture. (See labels on fixture housing)
  - To reduce the risk of electrical shock, and to assure proper operation, this fixture must be adequately grounded. To accomplish proper grounding, there must be a separate ground wire (green) contact between this fixture and the ground connection of your main power supply panel.
  - This fixture is intended to be used for general indoor lighting in dry or damp locations.
  - Disclaimer:  
Changes or modifications not expressly approved by the party responsible for compliance could void the user's authority to operate the equipment. NOTE: This equipment has been tested and found to comply with the limits for a Class B digital device, pursuant to Part 15 of the FCC Rules and Canadian ICES-005 (B) / NMB-005 (B). These limits are designed to provide reasonable protection against harmful interference in a residential installation. This equipment generates uses and can radiate radio frequency energy and, if not installed and used in accordance with the instructions, may cause harmful interference to radio communications. However, there is no guarantee that interference will not occur in a particular installation. If this equipment does cause harmful interference to radio or television reception, which can be determined by turning the equipment off and on, the user is encouraged to try to correct the interference by one or more of the following measures:
    - Reorient or relocate the receiver antenna.
    - Increase the separation between the equipment and receiver.
    - Connect the equipment into an outlet on a circuit different from that to which the receiver is connected.
    - Consult with the dealer or an experienced radio/TV technician for help.
- Any modifications to this fixture may void the warranty and interfere with the safe operation of the luminaire.  
Operation is subject to the following two conditions: (1) this device may not cause interference, and (2) this device must accept any interference, including interference that may cause undesired operation of the device.

## Assembly Instructions

### 1. Preparing for installation (Figure 1 & 4)

- Disconnect electrical power before installing or servicing any part of this fixture.
- Remove light fixture, hardware, canopy and parts bag from carton.
- Bring the supply wires with ground wire through the large hole in the canopy plate (1). Mount the canopy plate to the junction box with two screws (2).
- Thread nipple (4) and jam nut (3) to canopy plate (1) so that there is 1/4" of nipple protruding from the pan (5) for the finial (11) when the plate (1) is mounted to the junction box at the ceiling per **Figure 1 & 3**. Tighten the jam nut securely to the plate.
- Securely attach green (or green and yellow) wire from supply to green ground screw in plate (1). **This unit will not operate properly unless connected to a "grounded" electrical circuit. Electrical shock, overheating, low or no light output, and shortened lamp life can result if proper grounding is not done.**
- Uncoil braided wires of the LED pendants (10), loosen the set screw of strain relief (6) with small tool (included). Thread the loose ends through small end of cone shaped strain relief (6), nipple (7), lock washer (8) and nut (9) in that order per **Figure 1**.



**Figure 1**

### 2. Fixture Assembly & DC Wiring-

- Uncoil braided wire, part of three LED pendants (10). Loosen set screw with 2mm hex tool, (included), and thread the loose end through strain relief, (6). Thread thru small end of cone shaped part (6) first with flange end of crimp so all face down toward LED pendant, **Figure 1**.
- Temporarily secure strain relief onto braided wire at desired height by tightening set screw using hex-wrench provided. **Do not over tighten!**
- Feed the braided wire through these items in the following order above (6): nipple (7), hole in canopy (5), lock washer (8) and jam nut (9) per **Figure 1 & 3**. Thread strain relief onto nipple. Place nipple through hole in canopy. Tighten jam nut with lock washer onto nipple, inside of canopy.
- Prepare the outer braided wire (-) and insulated conductor (+) for wiring onto LED driver.
- Double sided adhesive tape is provided to affix three drivers in the canopy. Affix to bottom of driver and driver to inside of canopy (5), without blocking any holes. See **Figure 2**.
- Connect braided wire from each LED pendant (10), to a driver with two blue wire nuts as shown in **Figure 2**:  
The (+) from (10) insulated center conductor, to the (+) red wire from driver.  
The (-) from (10) braided outer conductor to (-) blue wire from driver. Excess braided wire to be coiled up inside the canopy.

# LED Pendant Series

Model: 3x Round; OTP, SXPL, LAPL, GEPL, BEPL

# LED Pendant Light

D2 Fixtures

### 3. Fixture Mounting & Wiring-

All 120VAC wiring must take place inside junction box.

**Caution:** Make sure power is off at fuse or circuit breaker box. Check power wires for damage or scrapes. If power supply wires are within three inches of driver, use wire suitable for at least 90C (194F). **Note:** Most dwellings built before 1985 have supply wire rated to 60C. Consult a qualified electrician before installing.

- Bring the assembled fixture with canopy up to the junction box in the ceiling. **MAKE SURE THE GLASS PENDANTS DO NOT KNOCK AGAINST EACH OTHER DURING THIS STEP!**
- Observing wire color convention, connect (hot) supply wire to three black driver leads. Connect white (common) supply wire to three white driver leads. Secure with orange wire nuts. Pull on each wire lead to make sure connections are secure. Make certain no bare wire is exposed outside of wire nuts.
- Make sure the connected supply wires are tucked inside of junction box.
- Place the canopy (5) center hole onto the stem from the center of canopy plate (1) installed in **Step 1, D**. Insert any wires that may be protruding around the top of the canopy so it sits flush against the ceiling, **Figure 3**.
- Secure with large finial (11) onto the stem, **Figure 1 & 3**.
- To make any final adjustment to the of the pendant length, loosen set screw using hex-wrench provided. Raise pendant light to desired height pushing excess wire into the canopy, or lower pendant by bringing more wire out of the canopy.
- Tighten set screw making sure crimp is inserted fully into strain relief (6), **Figure 1 & 3**.

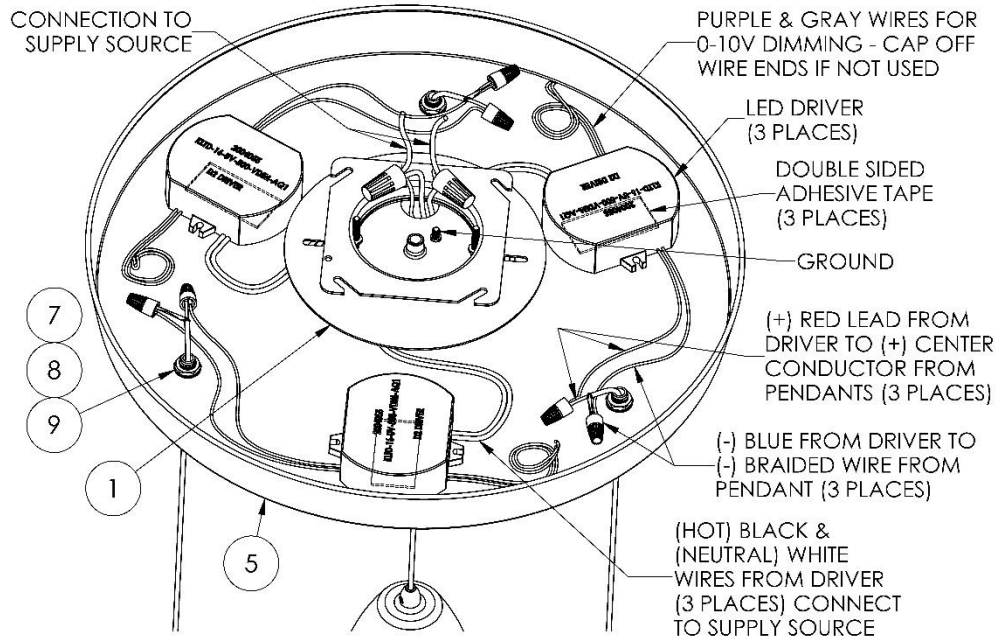


Figure 2

- Restore power at the fuse or breaker box.

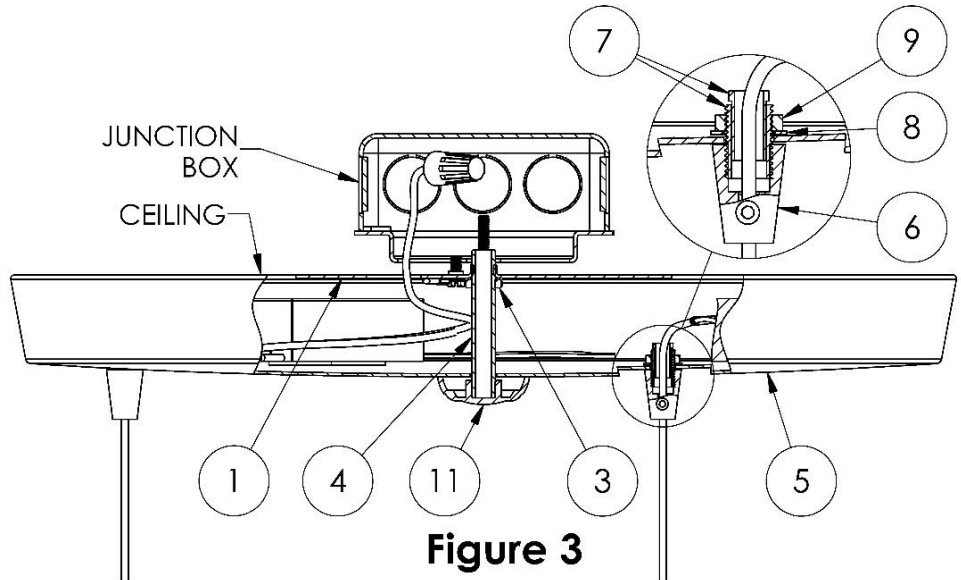


Figure 3

#### Limited Factory Warranty

AFX Inc. hereby warranty that this fixture is free from defects in materials and workmanship when installed and used under normal operating conditions for a period of 5 years from date of shipment from factory. This warranty covers all component parts and extends only to replacement of defective fixture or components; it does not cover failure due to improper installation, misuse, mishandling or damage incurred in transit.